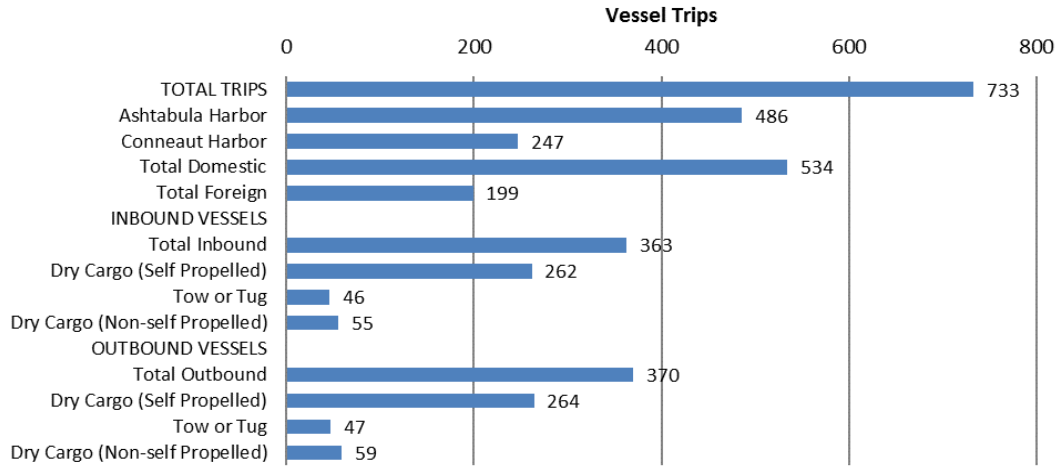


Summary

Ashtabula Harbor & Conneaut Harbor together handled over 700 vessel trips in 2013, including 200 foreign vessels. Ashtabula Harbor had 486 vessel trips compared to 247 vessel trips for Conneaut Harbor. A total of 9.6 million short tons of commodities were serviced through Ashtabula & Conneaut Harbors in 2014. This was about the 2007-14 average of 9.5 million short tons, but less than half of the peak levels of 21.4 million short tons handled in 2001. In 2014, Ashtabula Harbor and Conneaut Harbor handled the same amount of freight tonnage. However, Ashtabula Harbor handled a variety of commodities, whereas Conneaut primarily handled iron ore.

Ashtabula & Conneaut Harbor Vessel Traffic (2014)
Harbors Combined to Handle Over 700 Vessel Trips



Source: ACE, Waterborne Commerce of the US (2014). Preliminary

Ashtabula & Conneaut Harbor Vessel Traffic (2014)

Type of Vessel	Direction	Total Ashtabula Harbor	Total Conneaut Harbor	Total Domestic	Total Foreign
Total Inbound	Inbound	239	124	271	92
Dry Cargo (Self Propelled)	Inbound	163	99	170	92
Tow or Tug	Inbound	37	9	46	0
Dry Cargo (Non-self Propelled)	Inbound	39	16	55	0
Total Outbound	Outbound	247	123	263	107
Dry Cargo (Self Propelled)	Outbound	164	100	170	94
Tow or Tug	Outbound	40	7	41	6
Dry Cargo (Non-self Propelled)	Outbound	43	16	52	7
TOTAL TRIPS	Inbound/ Outbound	486	247	534	199

Source: ACE, Waterborne Commerce of the US (2014). Preliminary

Ashtabula & Conneaut Harbor Vessel Traffic (2014)

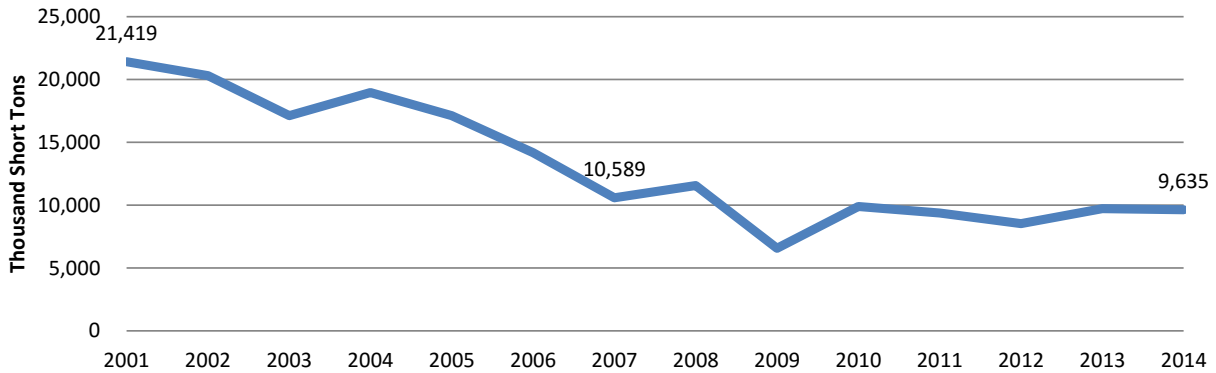
Type of Vessel	Direction of Vessel	Ashtabula- Total Domestic	Ashtabula- Total Foreign	Conneaut- Total Domestic	Conneaut- Total Foreign	Total Ashtabula & Conneaut	% of Total Ashtab. & Conn.
Total Inbound	Inbound	179	60	92	32	363	50%
Dry Cargo (Self Propelled)	Inbound	103	60	67	32	262	36%
Tow or Tug	Inbound	37	0	9	0	46	6%
Dry Cargo (Non-self Propelled)	Inbound	39	0	16	0	55	8%
Total Outbound	Outbound	175	72	88	35	370	51%
Dry Cargo (Self Propelled)	Outbound	105	59	65	35	264	36%
Tow or Tug	Outbound	34	6	7	0	47	6%
Dry Cargo (Non-self Propelled)	Outbound	36	7	16	0	59	8%
TOTAL TRIPS	Inbound/ Outbound	354	132	180	67	733	100%

Source: ACE, Waterborne Commerce of the US (2014). Preliminary

Combined Total Freight Traffic

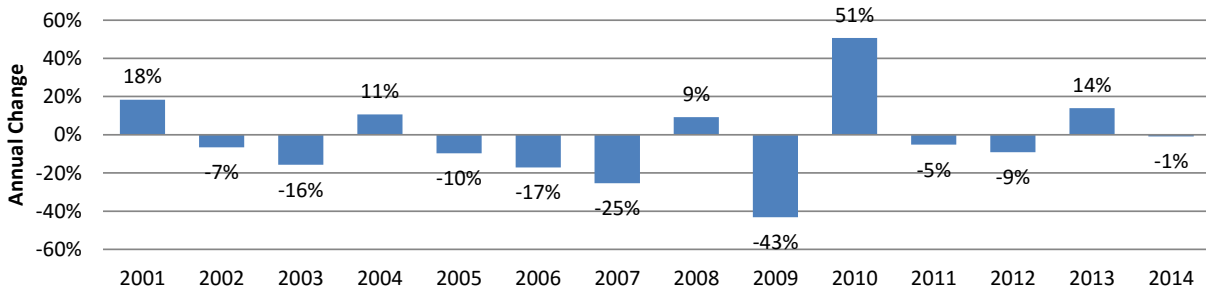
Ashtabula Harbor and Conneaut Harbor together handled 9.6 million short tons of freight in 2014, about the same as the 2013 tonnage. Both ports handled 4.8 million tons of freight in 2014. From 2007 to 2014, total freight has averaged 9.5 short tons, down from 21.4 tons in 2001.

Ashtabula/ Conneaut Harbors: Total Freight Traffic



Source: ACE, Waterborne Commerce of the US. (2014). 2014 data is preliminary.

Ashtabula-Conneaut Harbors: % Change in Total Freight Traffic



Source: ACE, Waterborne Commerce of the US (2014)

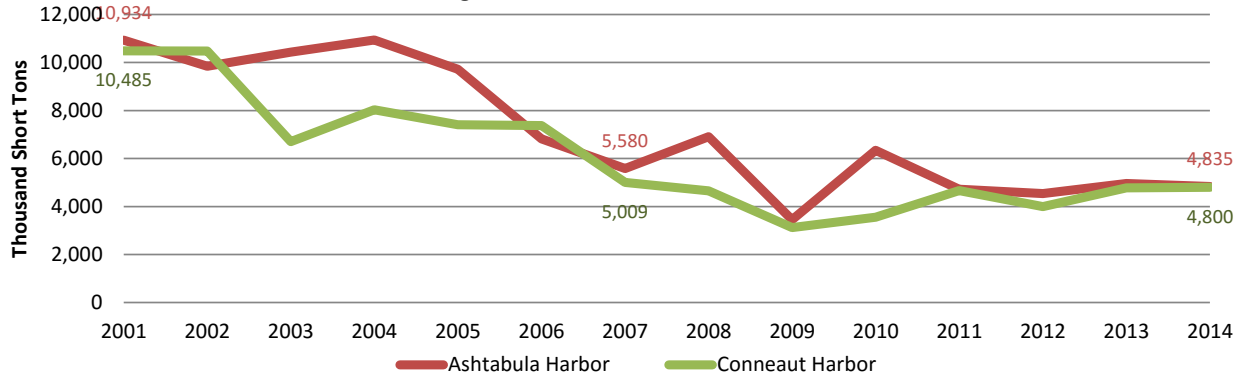
Ashtabula & Conneaut Harbor Traffic (thousand short tons)

Year	Ashtabula Harbor	Conneaut Harbor	Ashtabula/ Conneaut Total	%Chg-Ashtab. & Conneaut Harbor Total	Ashtabula Harbor- % Of Total	Conneaut Harbor- % of Total
2001	10,934	10,485	21,419	18%	51%	49%
2002	9,838	10,474	20,312	-7%	48%	52%
2003	10,427	6,705	17,132	-16%	61%	39%
2004	10,938	8,027	18,965	11%	58%	42%
2005	9,714	7,405	17,119	-10%	57%	43%
2006	6,822	7,368	14,190	-17%	48%	52%
2007	5,580	5,009	10,589	-25%	53%	47%
2008	6,906	4,654	11,560	9%	60%	40%
2009	3,448	3,122	6,570	-43%	53%	48%
2010	6,346	3,558	9,904	51%	64%	36%
2011	4,716	4,669	9,385	-5%	50%	50%
2012	4,540	3,990	8,530	-9%	53%	47%
2013	4,954	4,772	9,726	14%	51%	49%
2014	4,835	4,800	9,635	-1%	50%	50%
2007-14 Avg	5,200	4,300	9,500		55%	45%
2001-14 Chg	(6,099)	(5,685)	(11,784)			
2001-14 %Chg	-55.8%	-54.2%	-55.0%			
2007-14 Chg	(745)	(209)	(954)			
2007-14 %Chg	-13.4%	-4.2%	-9.0%			

Source: Army Corps of Engineers (ACE), Waterborne Commerce of the US (2014). Data is in Thousand Short Tons.

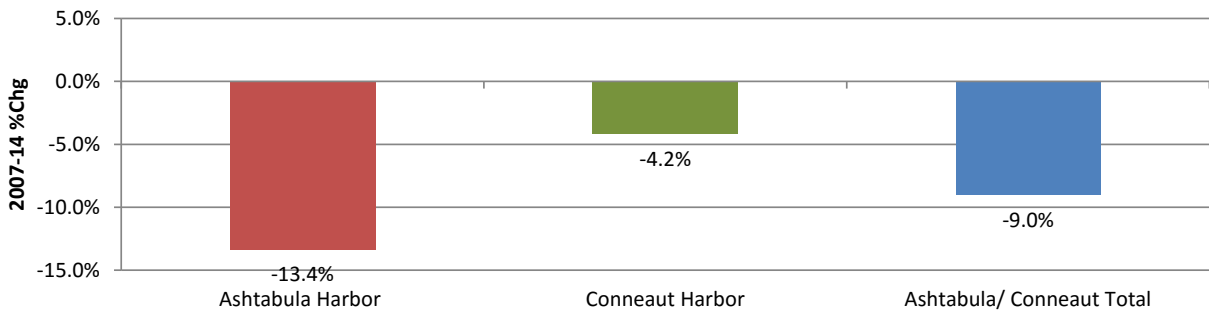
Ashtabula & Conneaut Harbors Freight Traffic

Freight Traffic Has Declined in Both Ports



Source: ACE, Waterborne Commerce of the US (2013)

Ashtabula & Conneaut Harbors: 2007-14 % Change



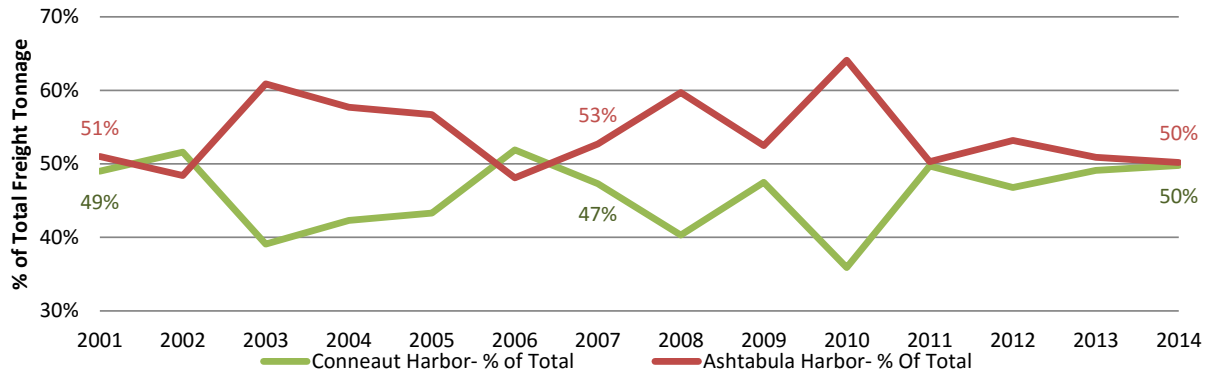
Source: ACE, Waterborne Commerce of the US (2013)

Ashtabula & Conneaut Harbor Freight Traffic

Year	Ashtabula Harbor	Conneaut Harbor	%Chg- Ashtabula Harbor	%Chg- Conneaut Harbor
2001	10,934	10,485	-11%	-1%
2002	9,838	10,474	-10%	0%
2003	10,427	6,705	6%	-36%
2004	10,938	8,027	5%	20%
2005	9,714	7,405	-11%	-8%
2006	6,822	7,368	-30%	-1%
2007	5,580	5,009	-18%	-32%
2008	6,906	4,654	24%	-7%
2009	3,448	3,122	-50%	-33%
2010	6,346	3,558	84%	14%
2011	4,716	4,669	-26%	31%
2012	4,540	3,990	-4%	-15%
2013	4,954	4,772	9%	20%
2014	4,835	4,800	-2%	1%
2007-13 Avg	5,200	4,300		
2001-13 Chg	(6,099)	(5,685)		
2001-13 %Chg	-55.8%	-54.2%		
2007-13 Chg	(745)	(209)		
2007-13 %Chg	-13.4%	-4.2%		

Source: ACE, Waterborne Commerce of the US (2014). Data is in Thousand Short Tons.

Ashtabula & Conneaut Harbors: % of Total Freight Traffic
Ashtabula & Conneaut Harbors Handle About the Same Freight Tonnage



Source: ACE, Waterborne Commerce of the US (2013)

Freight Traffic By Commodity

Ashtabula Harbor handles a variety of freight commodities, including limestone, coal & lignite and iron ore. About three-fourths of Conneaut Harbor's freight tonnage was iron ore.

Ashtabula & Conneaut Harbor Freight Traffic By Commodity (2014)

Commodity	Ashtabula Harbor	Conneaut Harbor	Ashtabula/Conneaut Total	% of Ashtabula Harbor	% of Conneaut Harbor	% of Total
Coal & lignite	2,422	722	3,144	50%	15%	33%
Coal Coke	45		45	1%	0%	0%
Fab Metal Prod	45	7	52	1%	0%	1%
Farm Prod	1	0	1	0%	0%	0%
I&S Bars	7		7	0%	0%	0%
Iron & Steel Scrap	0	53	53	0%	1%	1%
Iron Ore	344	3674	4,018	7%	77%	42%
Lime		6	6	0%	0%	0%
Limestone	1626	265	1,891	34%	6%	20%
Non-Ferrous	22		22	0%	0%	0%
Non-Ferrous Scrap	160		160	3%	0%	2%
Non-Mineral	140	47	187	3%	1%	2%
Slag	0	26	26	0%	1%	0%
Smelted Prod	23	0	23	0%	0%	0%
Total	4,835	4,800	9,635	100%	100%	100%

Source: ACE, Waterborne Commerce of the US (2014). Data is in Thousand Short Tons.