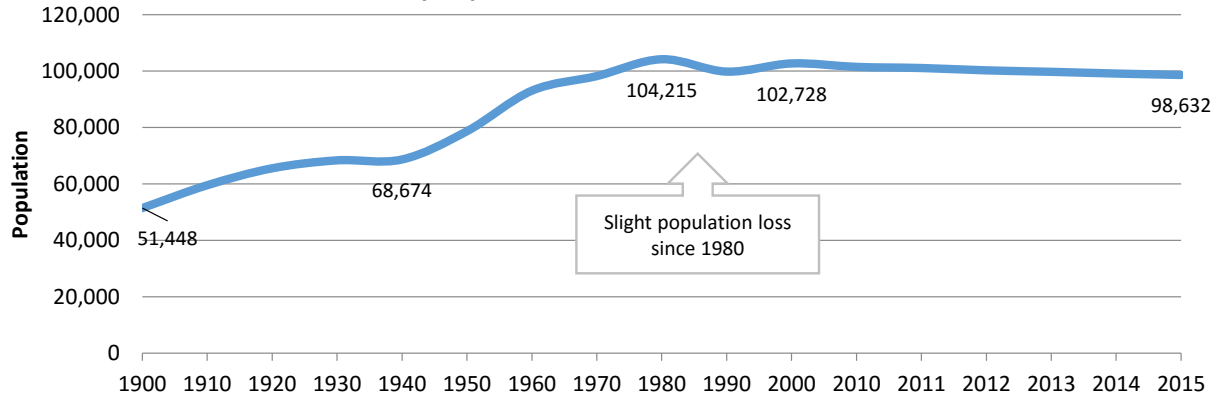


Summary

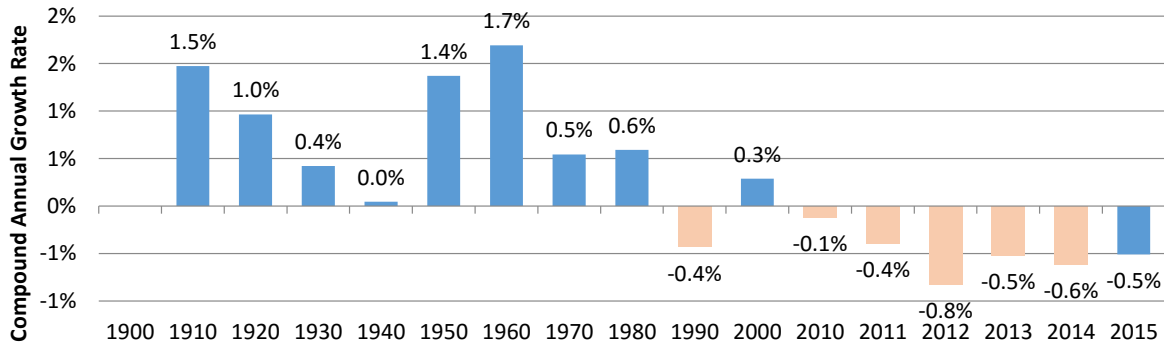
Ashtabula County's 2015 population was estimated at 98,632, a loss of 2,865 (2.8%) since 2010. Population losses have been the result of significant net outmigration, which has averaged 500 per year since 2003. The county population is projected by state authorities to drop to 98,600 by 2040.

Ashtabula County Population (1900-2015) County Population Has Not Grown Since 1980



Source: Ohio Dev. Svcs. Agency & USCB, Pop. Est. Div.

Ashtabula County Population Compound Growth Rate Population Grew At 1% CAGR From 1900 to 1980, But Has Been 0% (or Less) Since 1980



Source: Ohio Dev. Svcs. Agency & USCB, Pop. Est. Div.

Ashtabula County Population (1960-2015)

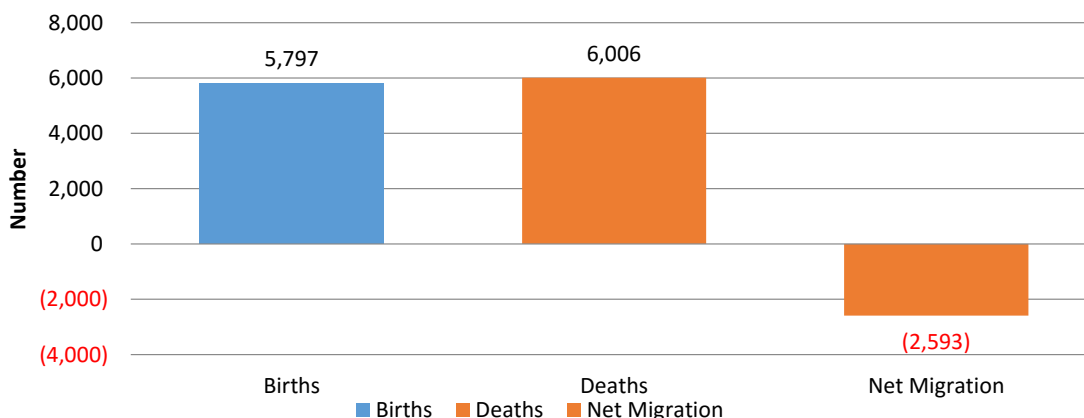
Year	Number	Compound Annl Growth Rate
1960	93,067	1.69%
1970	98,237	0.54%
1980	104,215	0.59%
1990	99,821	-0.43%
2000	102,728	0.29%
2010	101,497	-0.12%
2011	101,099	-0.39%
2012	100,268	-0.82%
2013	99,750	-0.52%
2014	99,138	-0.61%
2015	98,632	-0.51%

Source: Ohio Dev. Services Agency, Office of Research, & USCB, Pop Est Div

Ashtabula County Population Change and Migration

Components of 2010-15 Population Change	
2010 Population	101,497
2015E Population	98,632
Pop Change 2010-15	(2,865)
% Pop Change 2010-15	-2.8%
Natural Increase	(209)
Vital Events	
Births	5,797
Deaths	6,006
Net Migration	(2,593)
International	375
Domestic	(2,968)
Source: USCB, Pop Est Div	

Ashtabula County Births, Deaths & Migration (2010-2014)

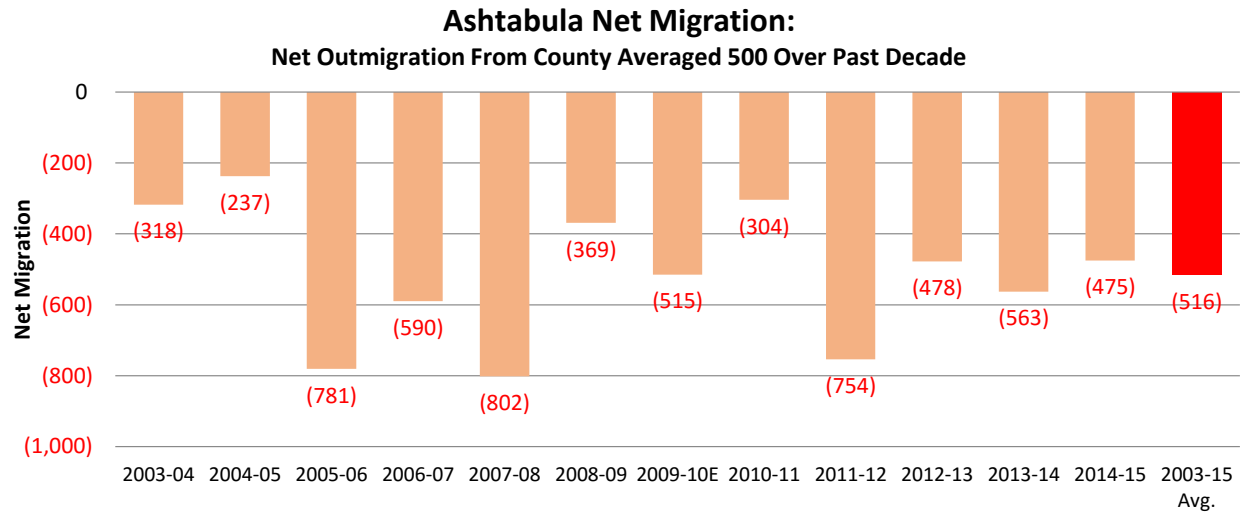


Source: USCB, Pop. Est. Div.

Ashtabula Vital Statistics		
	Number	Rate
Births / rate per 1,000 women aged 15-44	1,073	63.1
Teen births / rate per 1,000 females 15-19	126	40.8
Deaths / rate per 100,000 population	1,112	1,108.7
Marriages / rate per 1,000 population	581	5.8
Divorces / rate per 1,000 population	384	3.8
Source: Ohio Development Services Agency, Office of Research		

Ashtabula County Population Change and Migration

Since 2003, Ashtabula Co. has averaged net outmigration of over 500 per year.



Summary of Net Migration	
	Net Migration
2003-04	(318)
2004-05	(237)
2005-06	(781)
2006-07	(590)
2007-08	(802)
2008-09	(369)
2009-10E	(515)
2010-11	(304)
2011-12	(754)
2012-13	(478)
2013-14	(563)
2014-15	(475)
2003-15 Avg.	(516)
2003-15 Total	(6,186)

Source: Ohio Dev. Svc Agency & USCB, Pop Est Div

Ashtabula County population was projected to be about 98,600 in 2040 by State of Ohio forecasters.

Ashtabula County Projected Population (2020-40)		
Year	Number	Compound Annl Growth Rate
2000	102,728	
2010	101,497	-0.12%
2020P	101,230	-0.03%
2030P	100,130	-0.09%
2040P	98,610	-0.17%

Source: Ohio Dev. Services Agency, Office of Research, & USCB, Pop Est Div

Ashtabula Projected Population (2020-2040)
Slight Decrease From Current Levels Is Projected Over Next 25 Years

